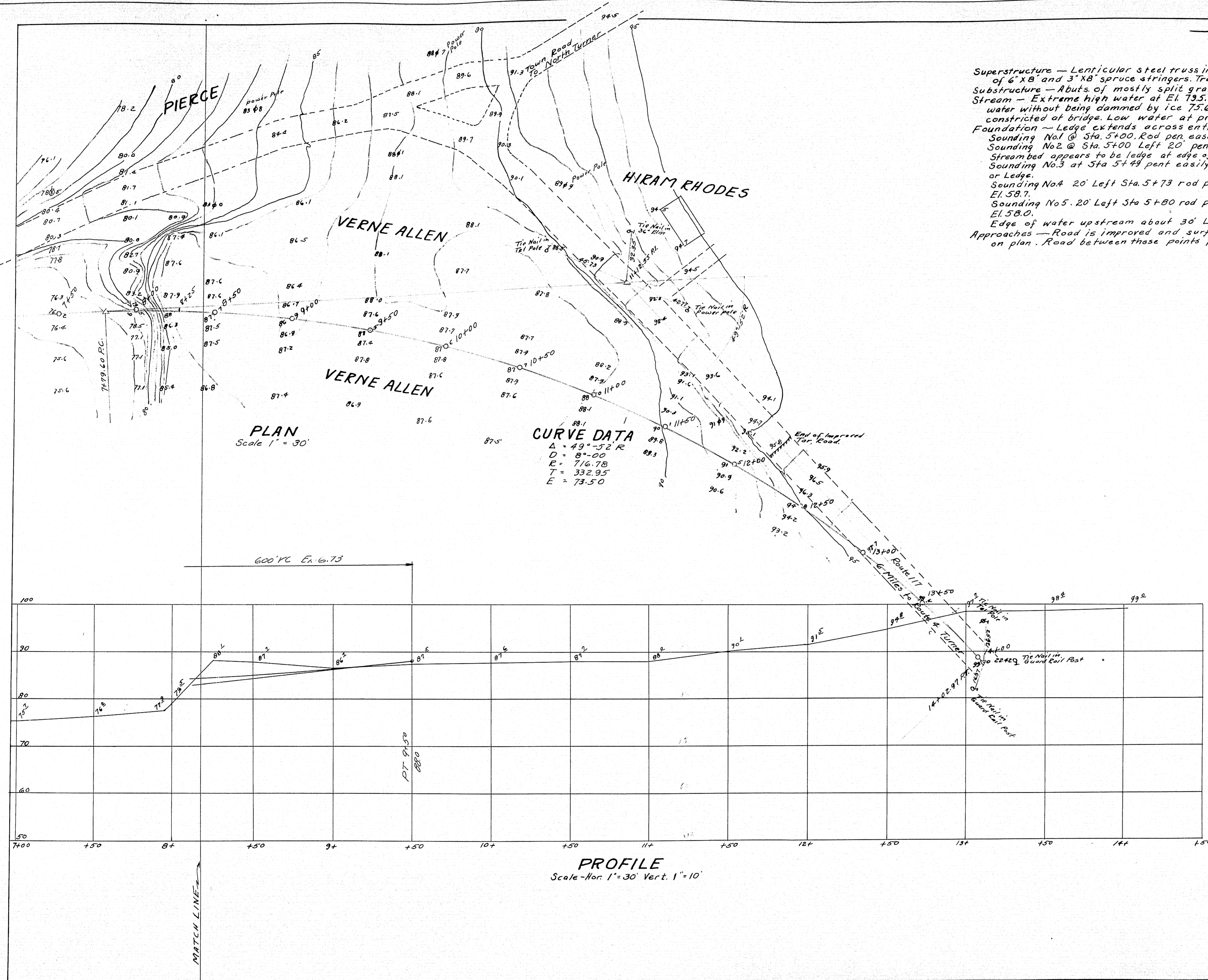


—NOTES—

Superstructure — Lenticular steel truss in fair condition. Six panels of 12' each. (B) stringers of 6" x 8" and 3" x 8" spruce stringers. Transverse planking of 3" oak in good condition.
 Substructure — Abuts. of mostly split granite fairly well laid dry in fair condition.
 Stream — Extreme high water at El. 79.5. This high water due to ice jam below bridge. High water without being dammed by ice 75.6. Driftage on Abut. at El. 74.6. Stream appears to be constricted at bridge. Low water at present stage.
 Foundation — Ledge extends across entire stream bed just downstream from bridge.
 Sounding No. 1 @ Sta. 5+00. Rod pen. easily 4' to El. 59.2 then slower until hit Ledge at El. 56.5.
 Sounding No. 2 @ Sta. 5+00 Left 20' pent. thru soft mud to Ledge at El. 57.6.
 Streambed appears to be ledge at edge of water just upstream and downstream of line.
 Sounding No. 3 at Sta. 5+49 pent. easily 5' thru soft mud and clay to El. 51.6 to hit boulder or Ledge.
 Sounding No. 4 20' Left Sta. 5+73 rod pen. easily 4' below ground to Ledge or boulder at El. 58.7.
 Sounding No. 5 20' Left Sta. 5+80 rod pen. easily 6' below ground to Ledge or boulder at El. 58.0.
 Edge of water upstream about 30' Ledge or boulders.
 Approaches — Road is improved and surface treated with tar on each side of bridge as shown on plan. Road between these points poorly improved gravel road.

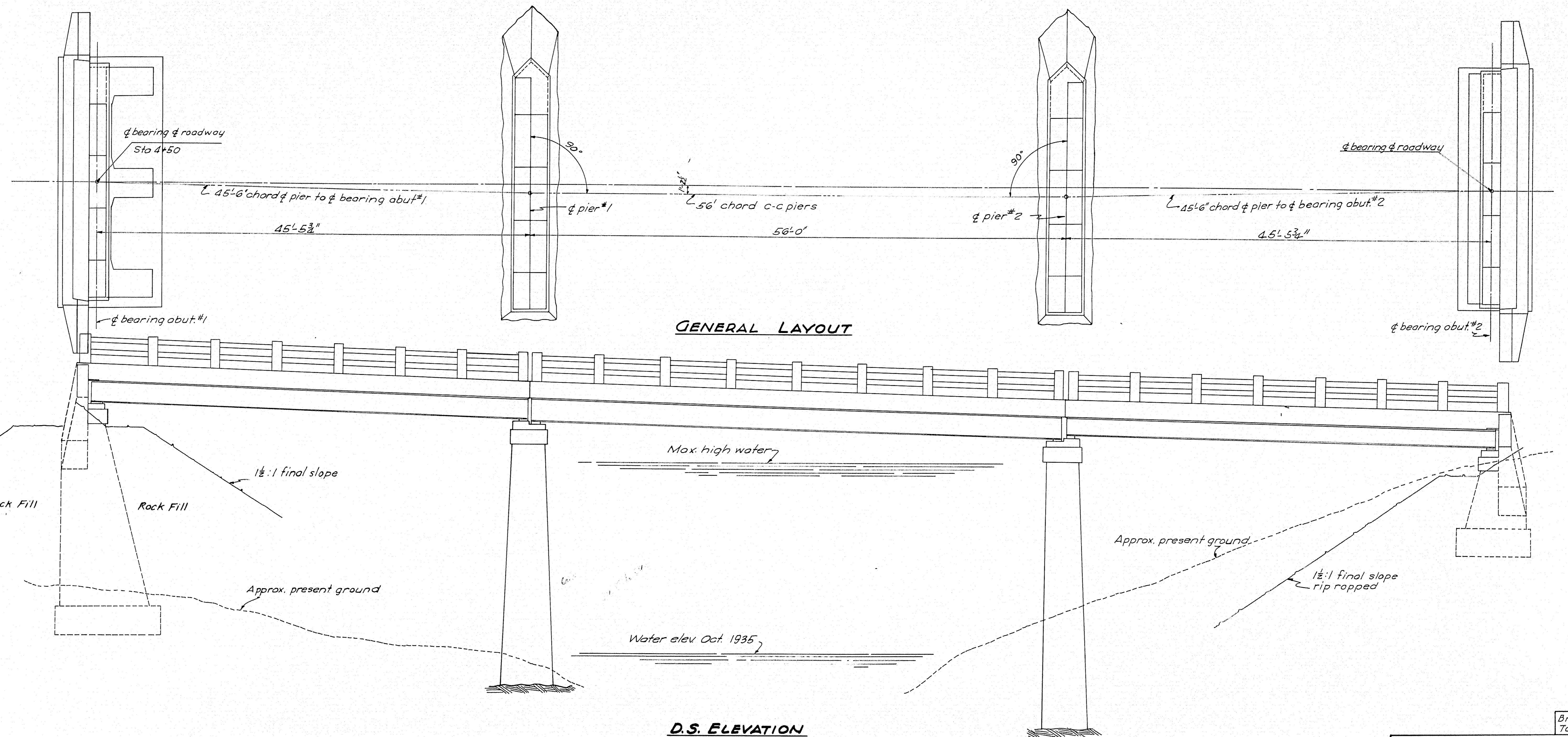


Bridge 3287
Town 09-07

Maine Highway Commission
Bridge Division
HALL BRIDGE
over
NEZINSCOT RIVER
in
BUCKFIELD
OXFORD COUNTY
SURVEY
Sheet 2 of 6 Augusta, Me. Oct. 21, 1935

24-62

0 1 2 3 4 5 INCHES



D.S. ELEVATION

Scales Hor. & Ver. $\frac{3}{16}" = 1'-0"$

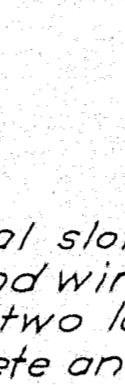
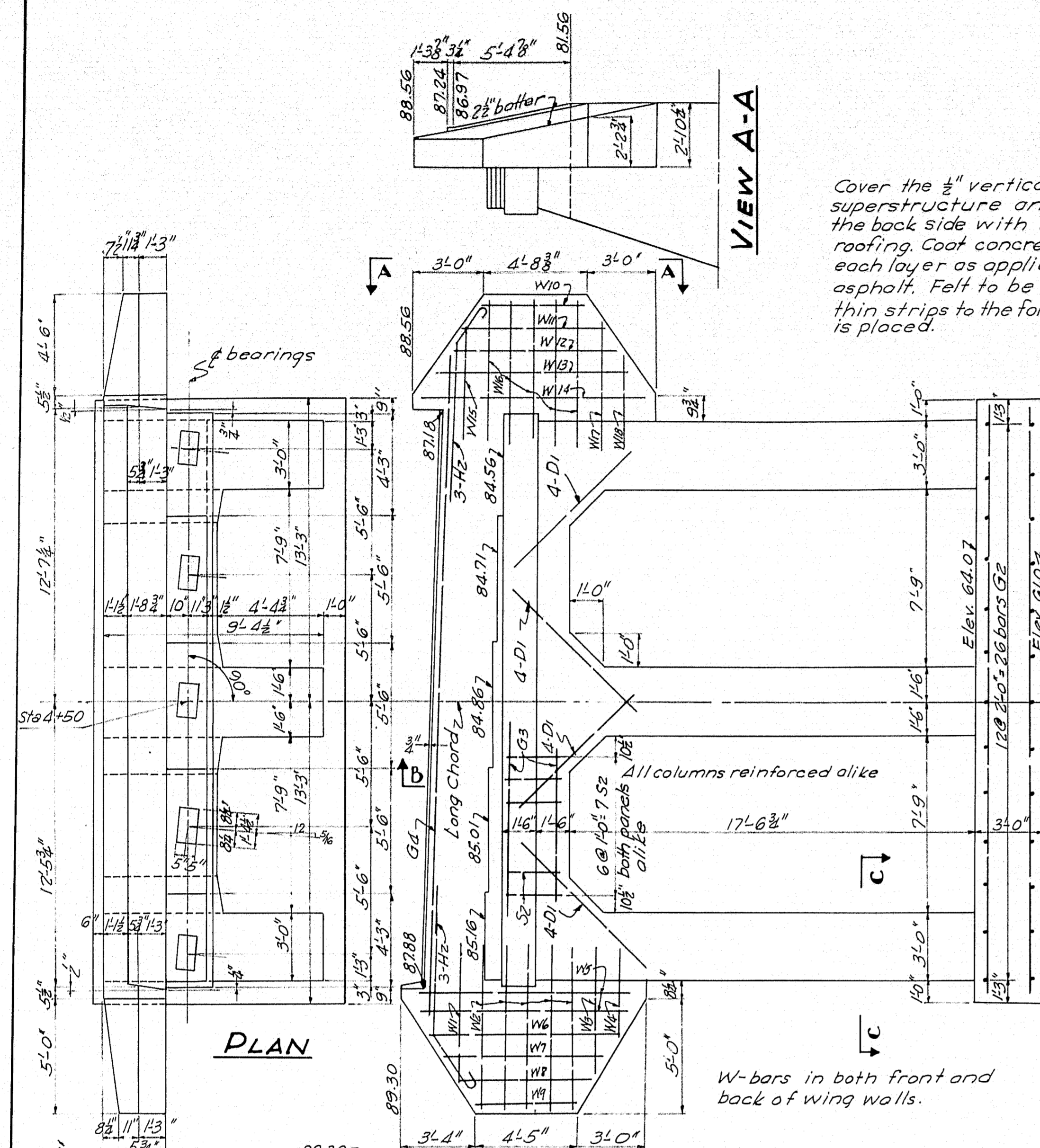
Plan V&E
Traced M.L. 4/36
by B.J.W.

Bridge 3287
Town 09-07

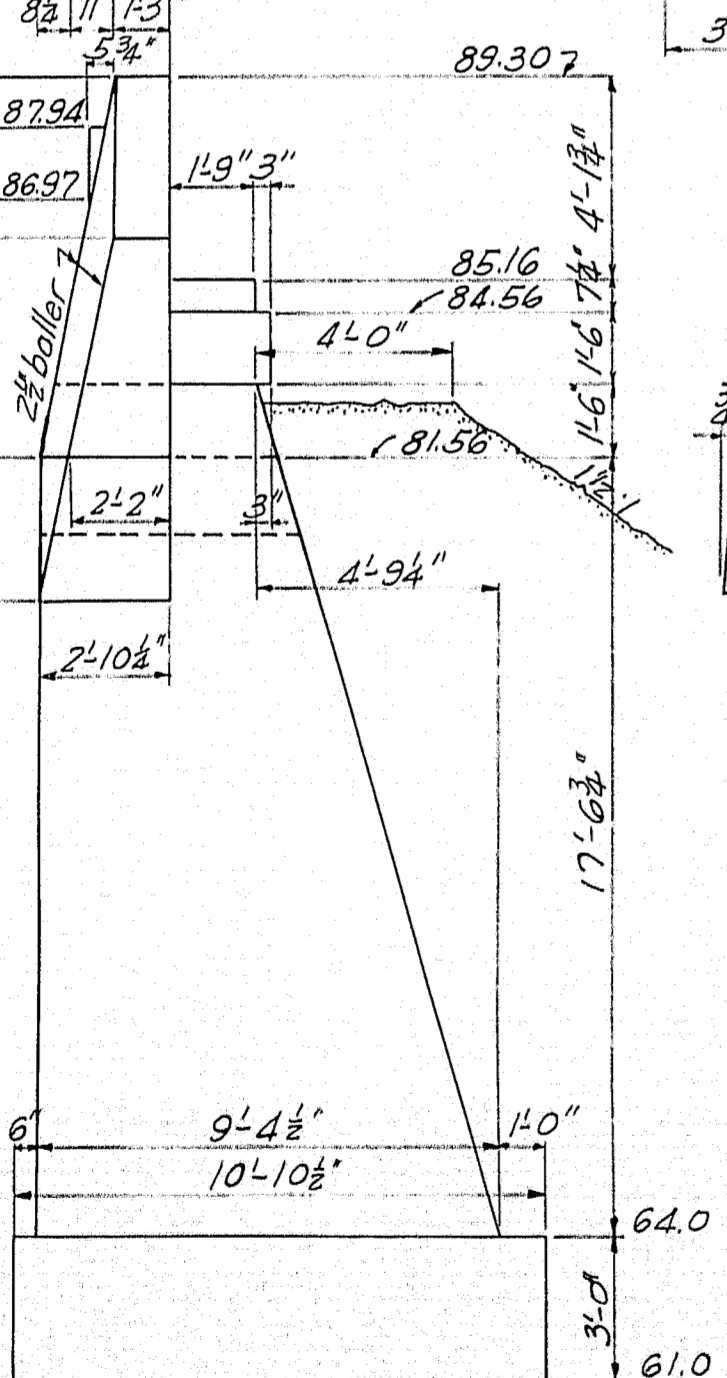
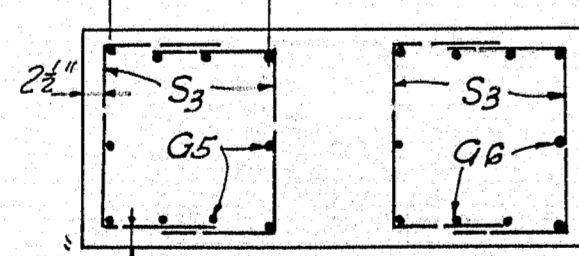
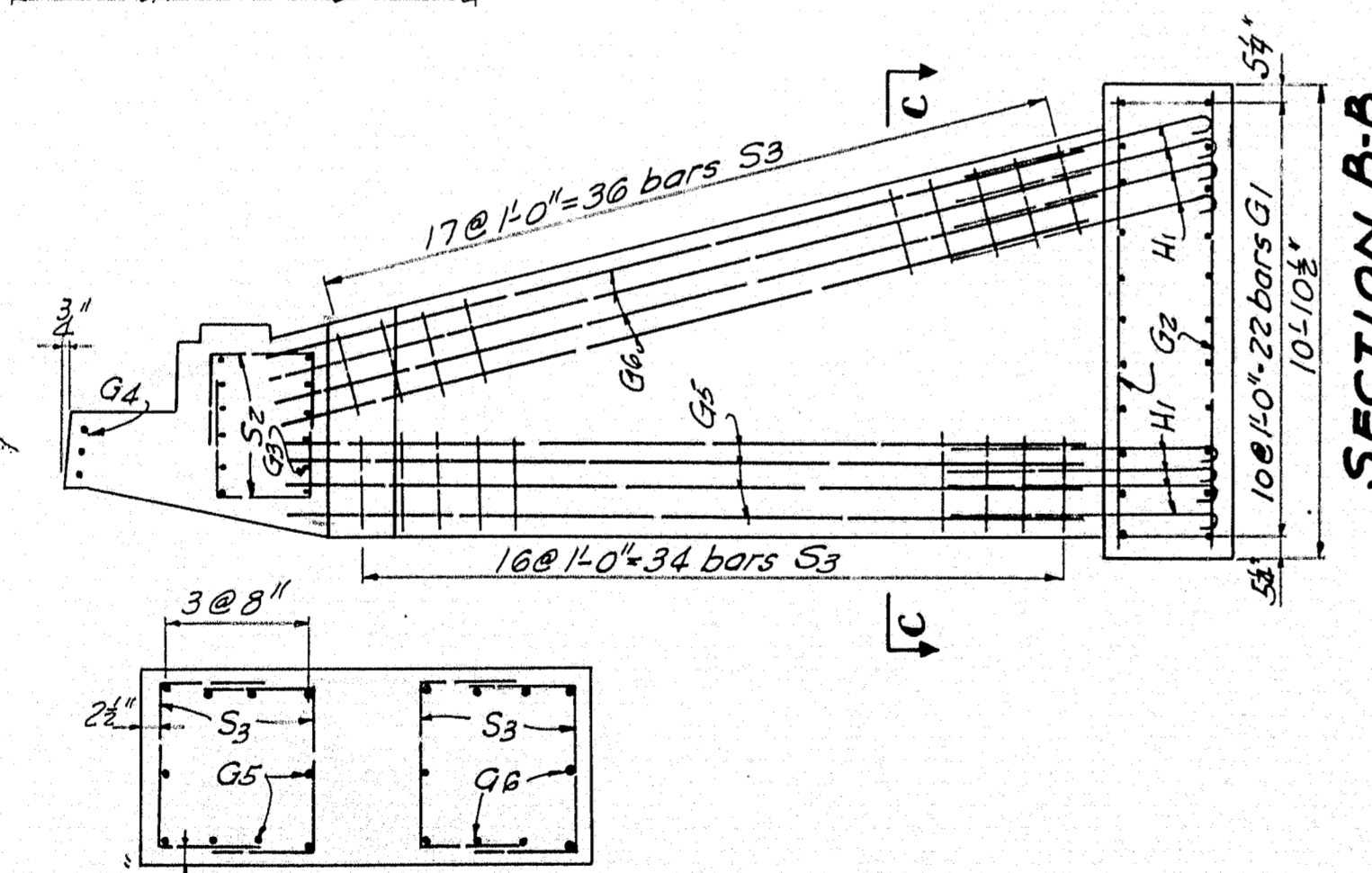
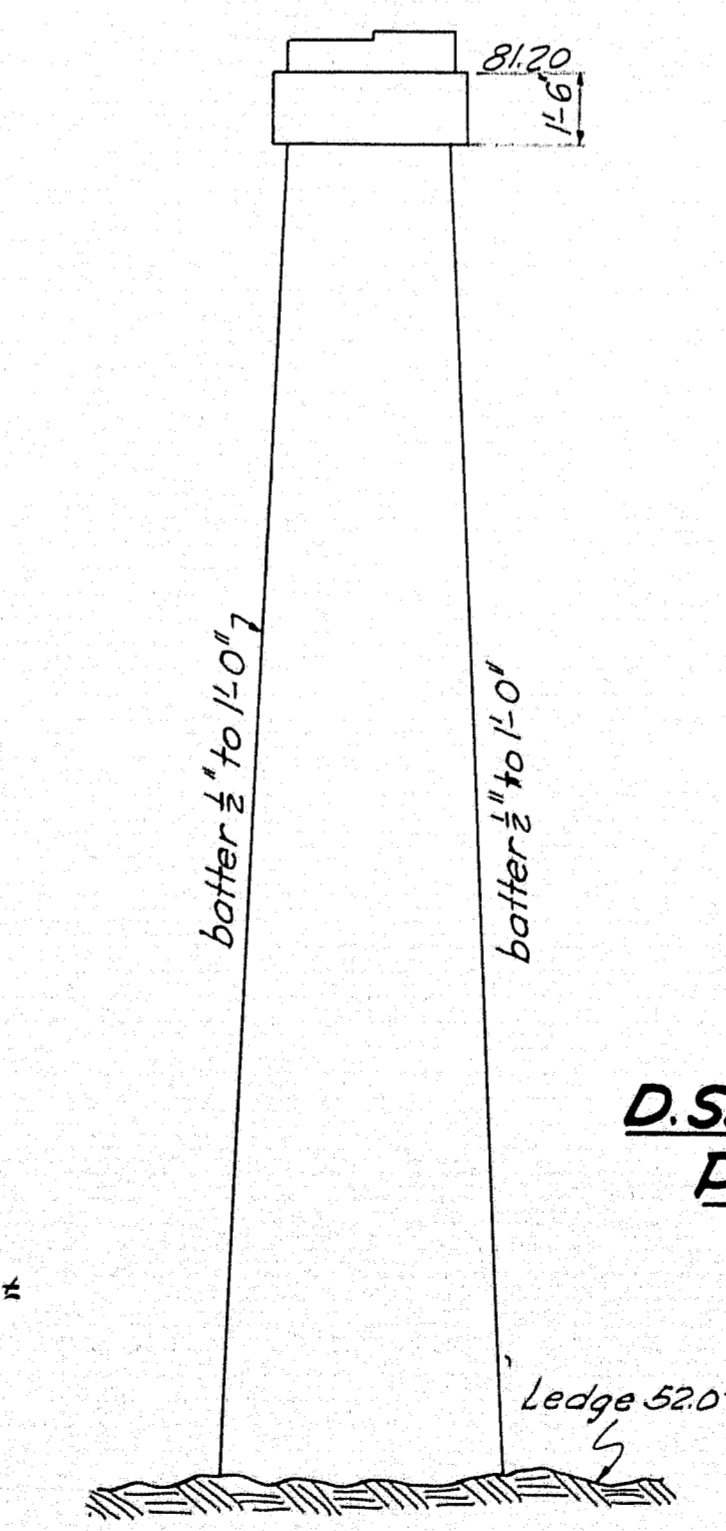
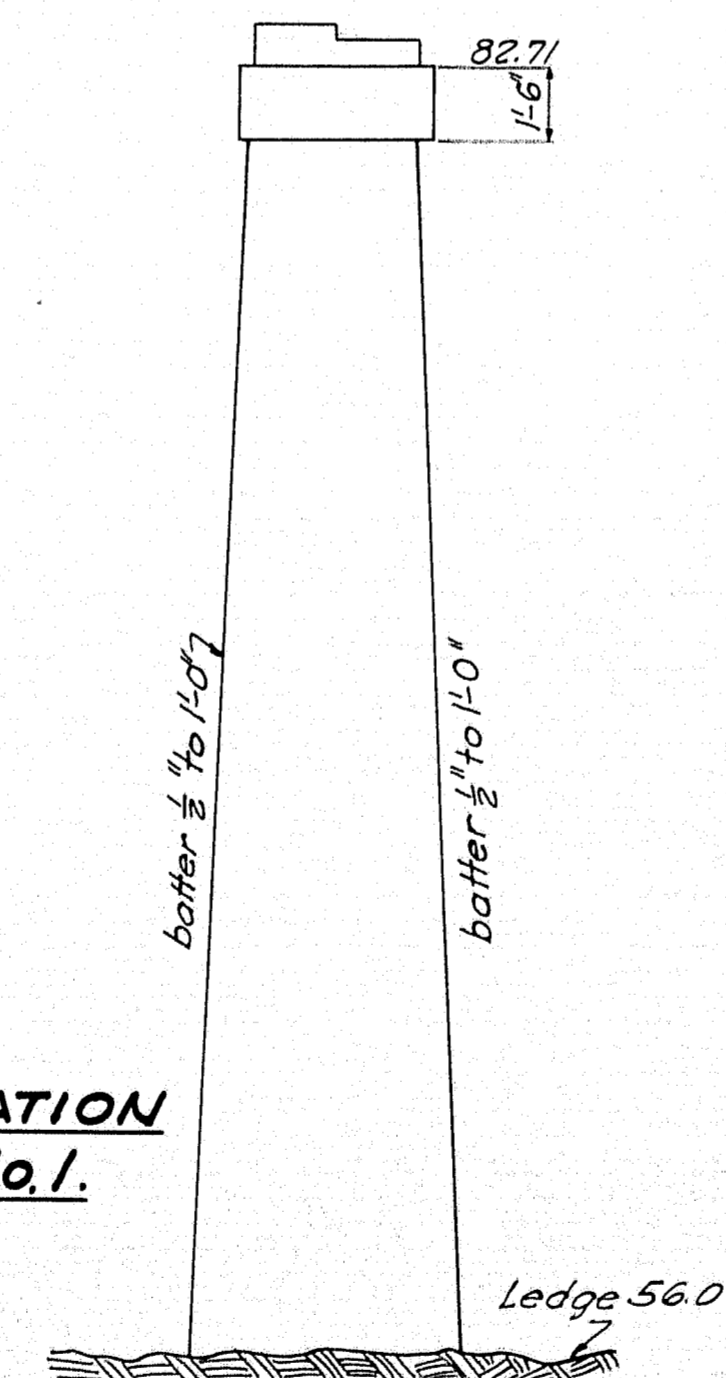
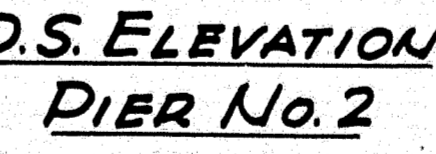
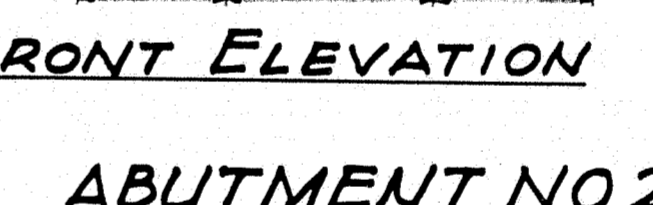
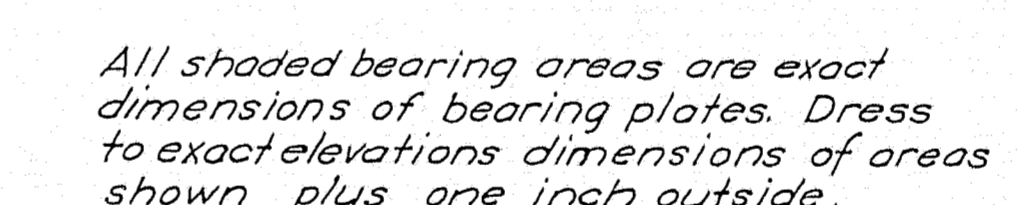
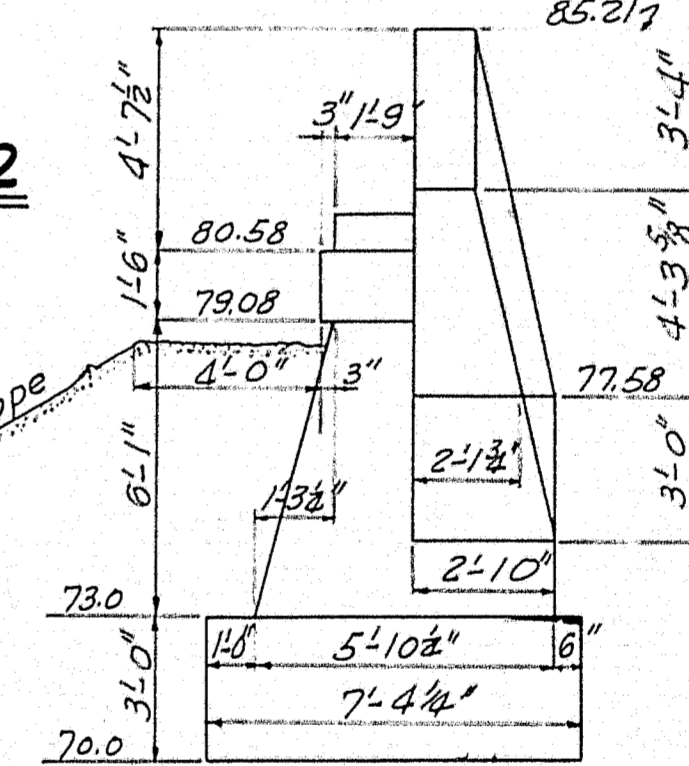
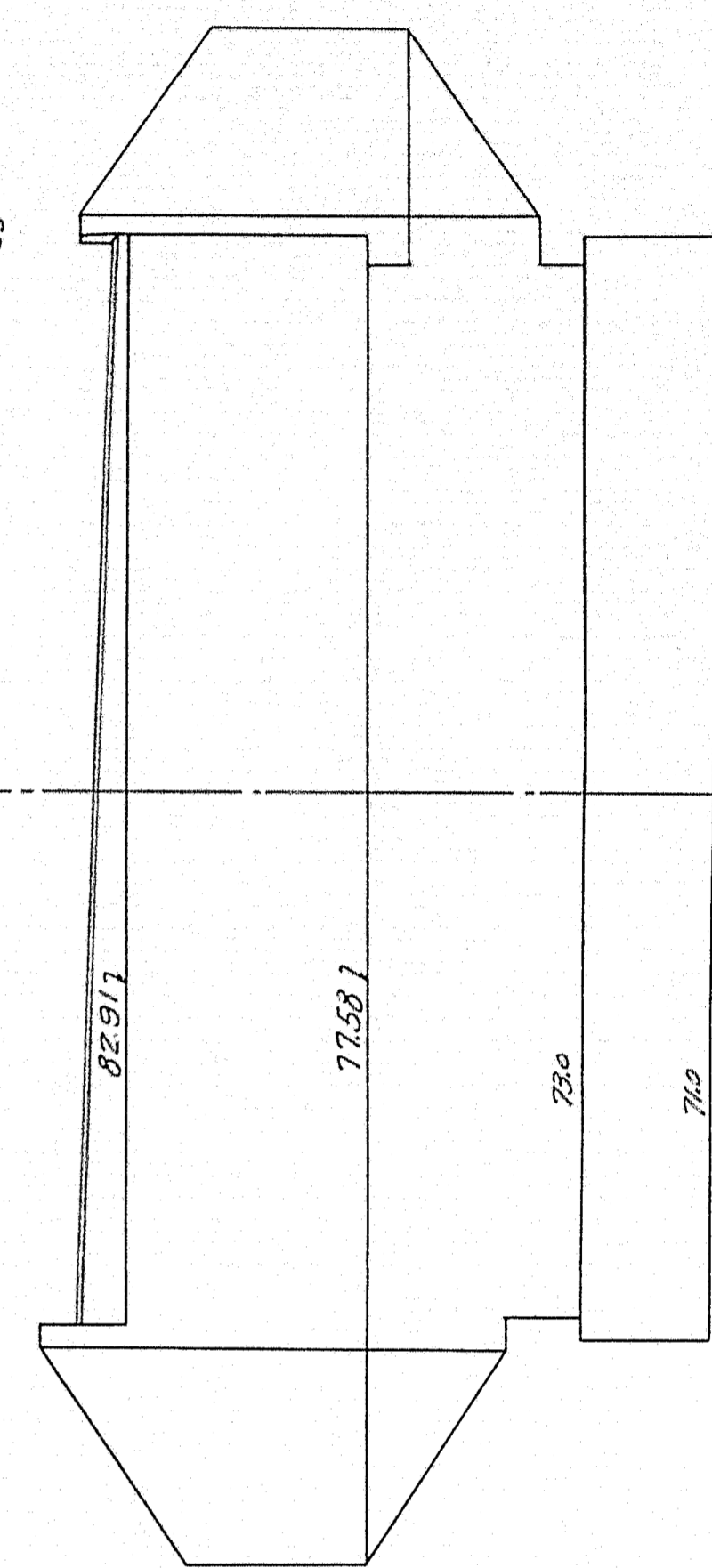
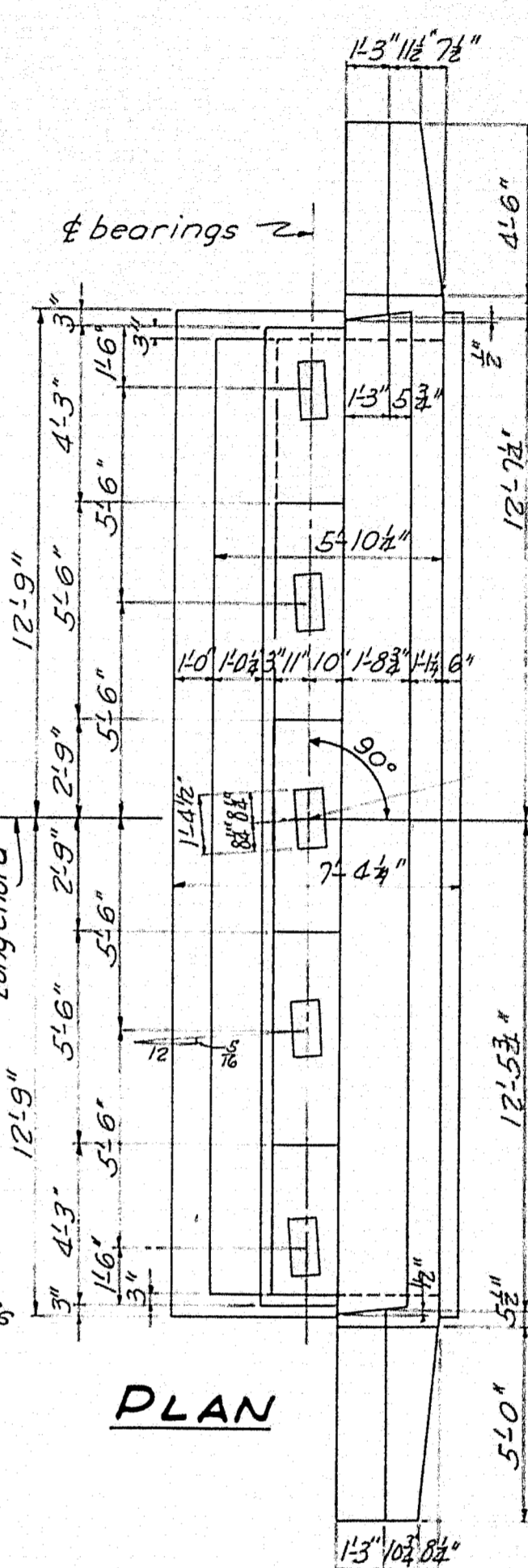
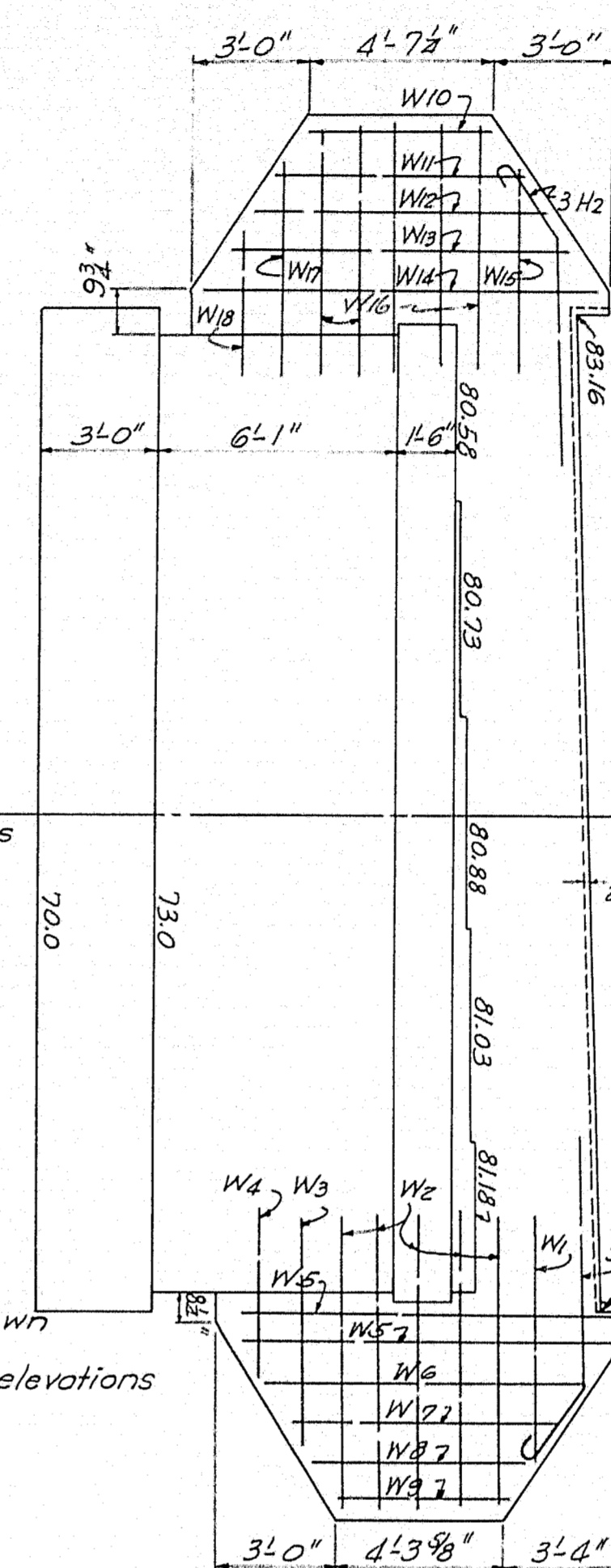
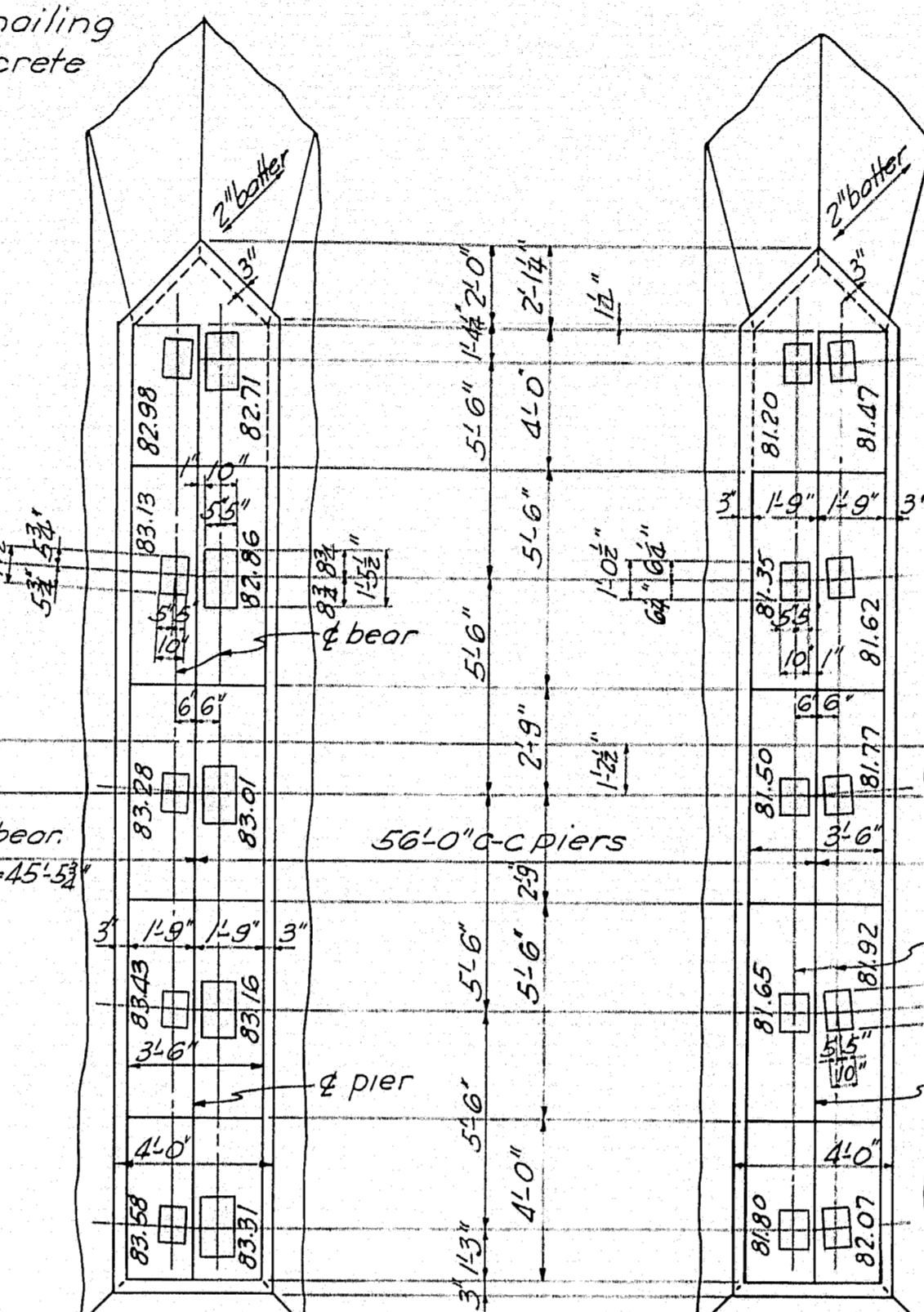
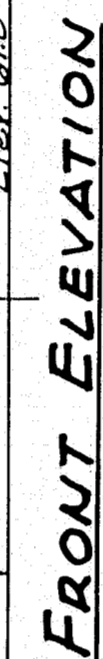
STATE HIGHWAY COMMISSION
BRIDGE DIVISION
HALL BRIDGE
OVER
NEZINSCOT RIVER
in the town of
BUCKFIELD
OXFORD COUNTY
GENERAL LAYOUT
Sheet 3 of 6 Augusta, Me. April 1936

24-63

0 1 2 3 4 5 INCHES



Cover the $\frac{1}{2}$ " vertical slots between superstructure and wing walls on the back side with two layers of heavy roofing. Coat concrete and back of each layer as applied with hot tar or asphalt. Felt to be recessed $\frac{1}{4}$ " by nailing thin strips to the forms before concrete is placed.

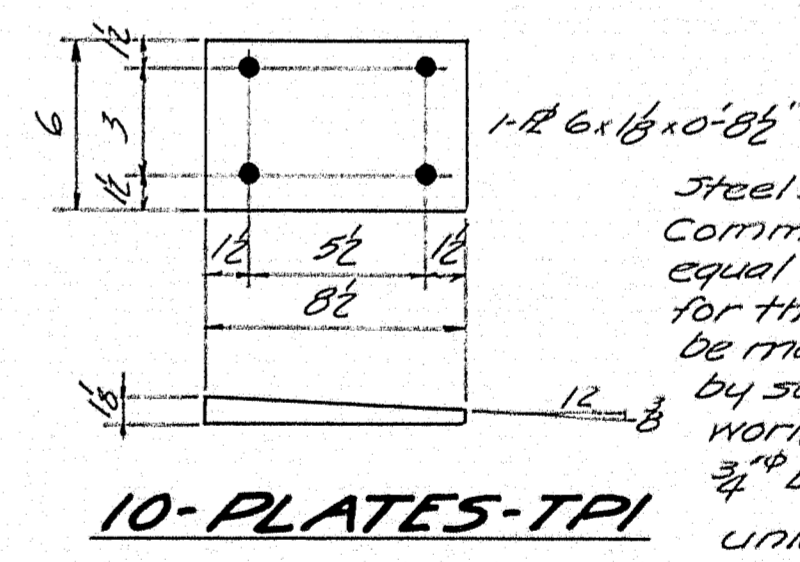
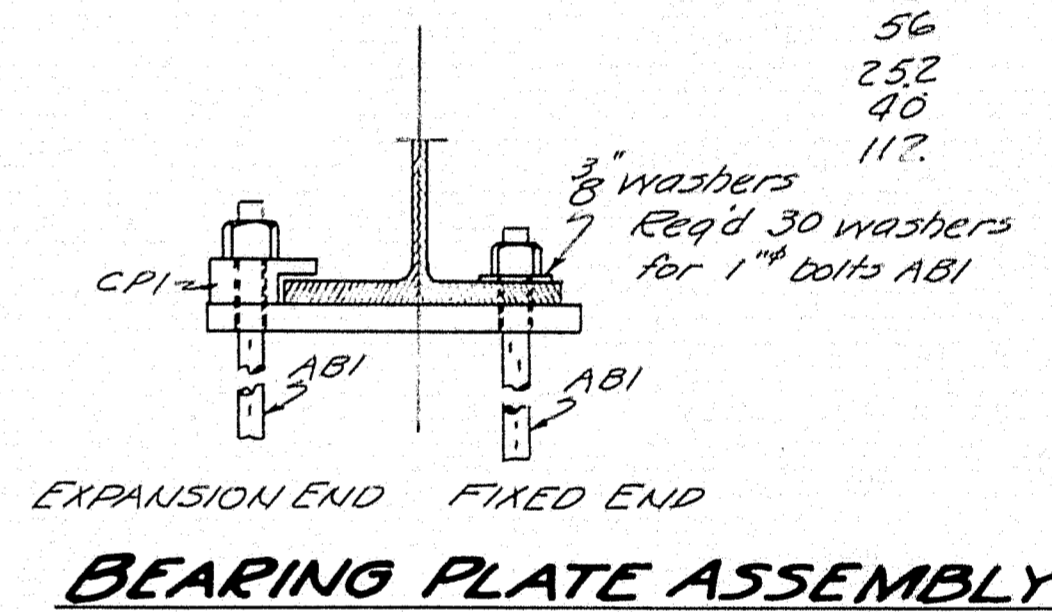
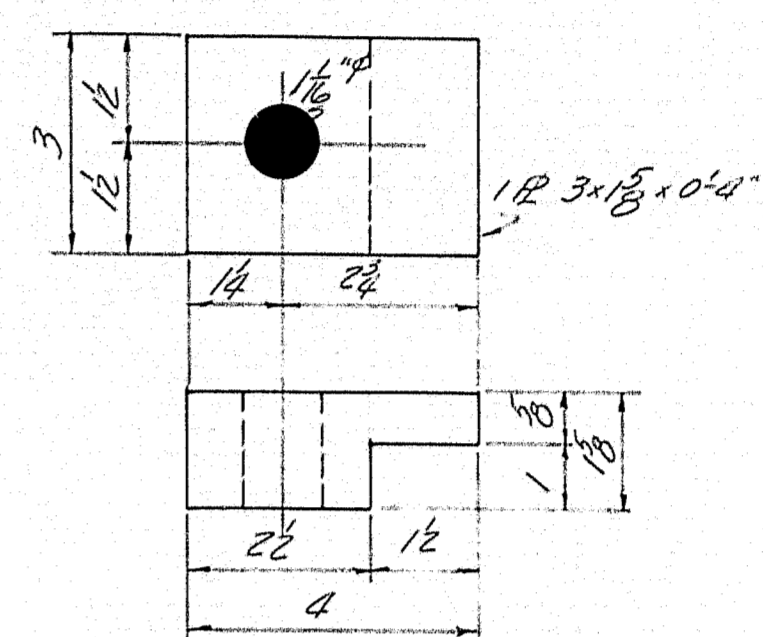
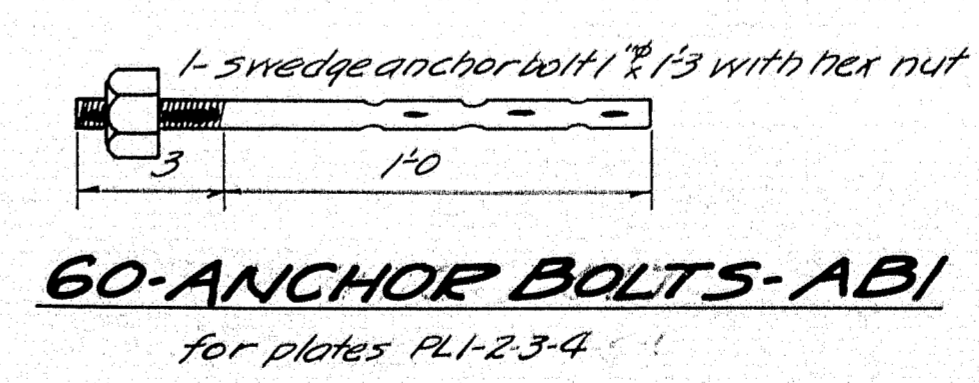
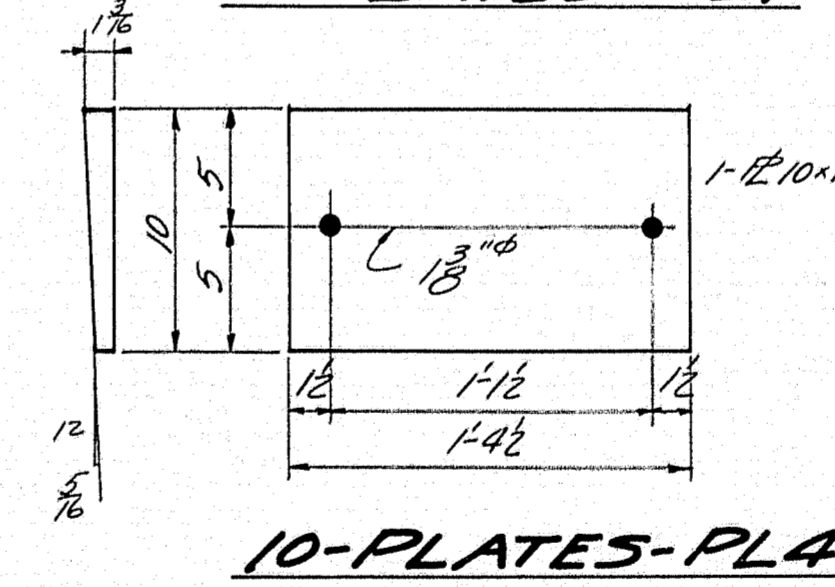
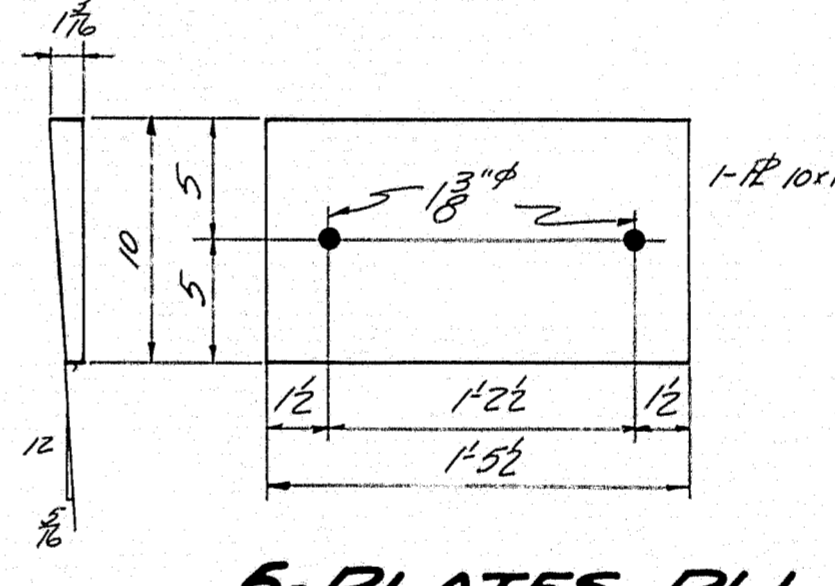
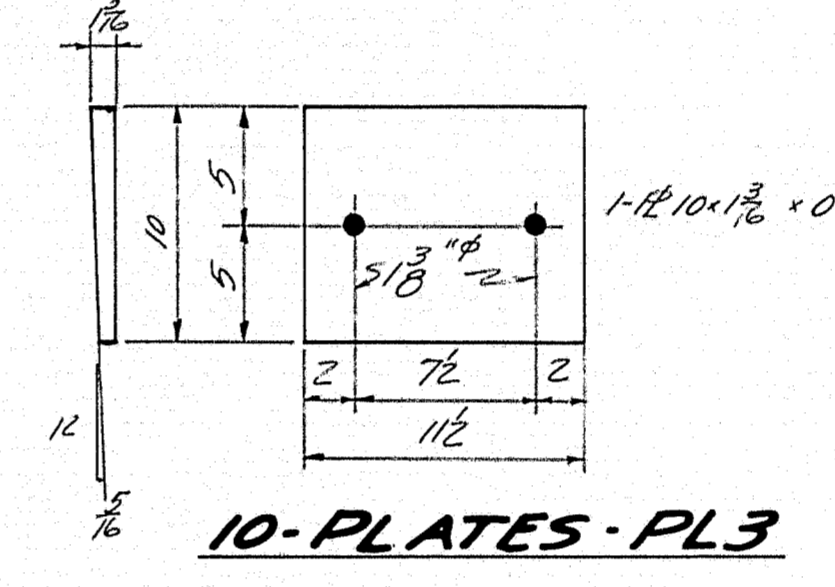
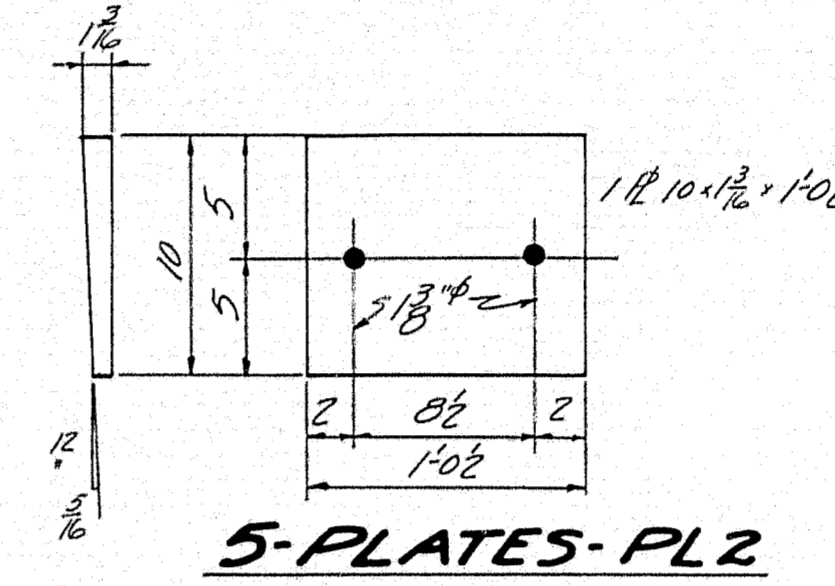
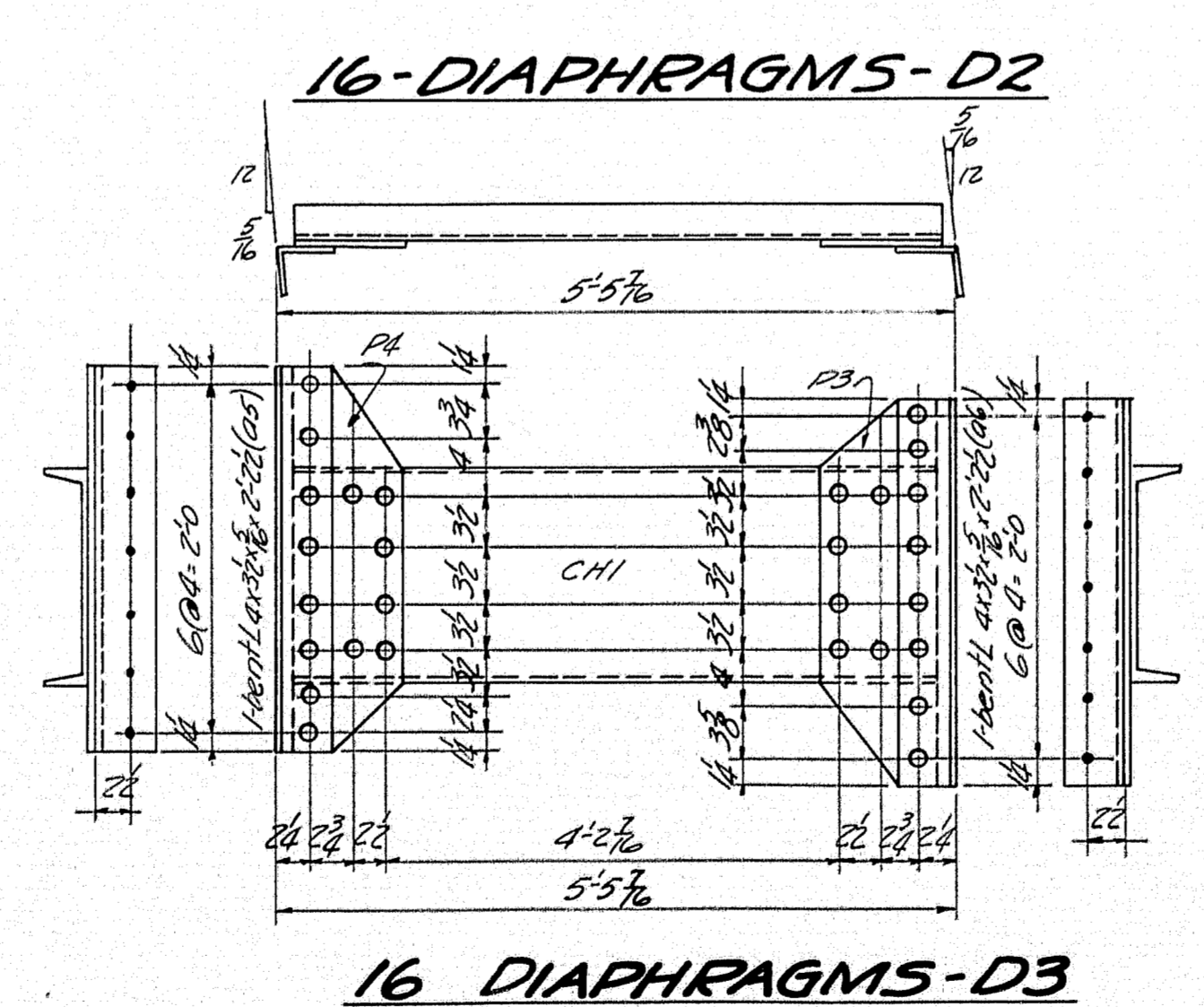
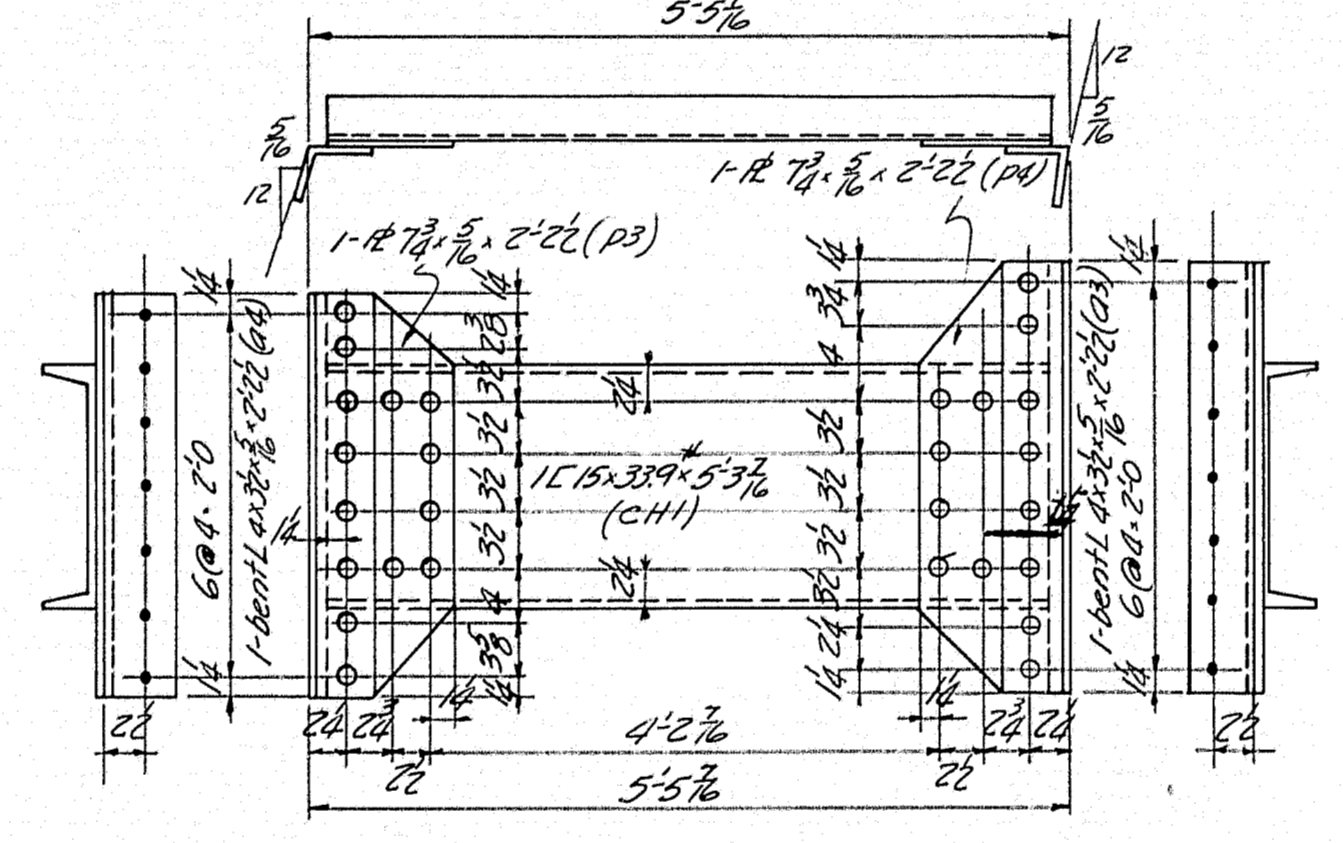
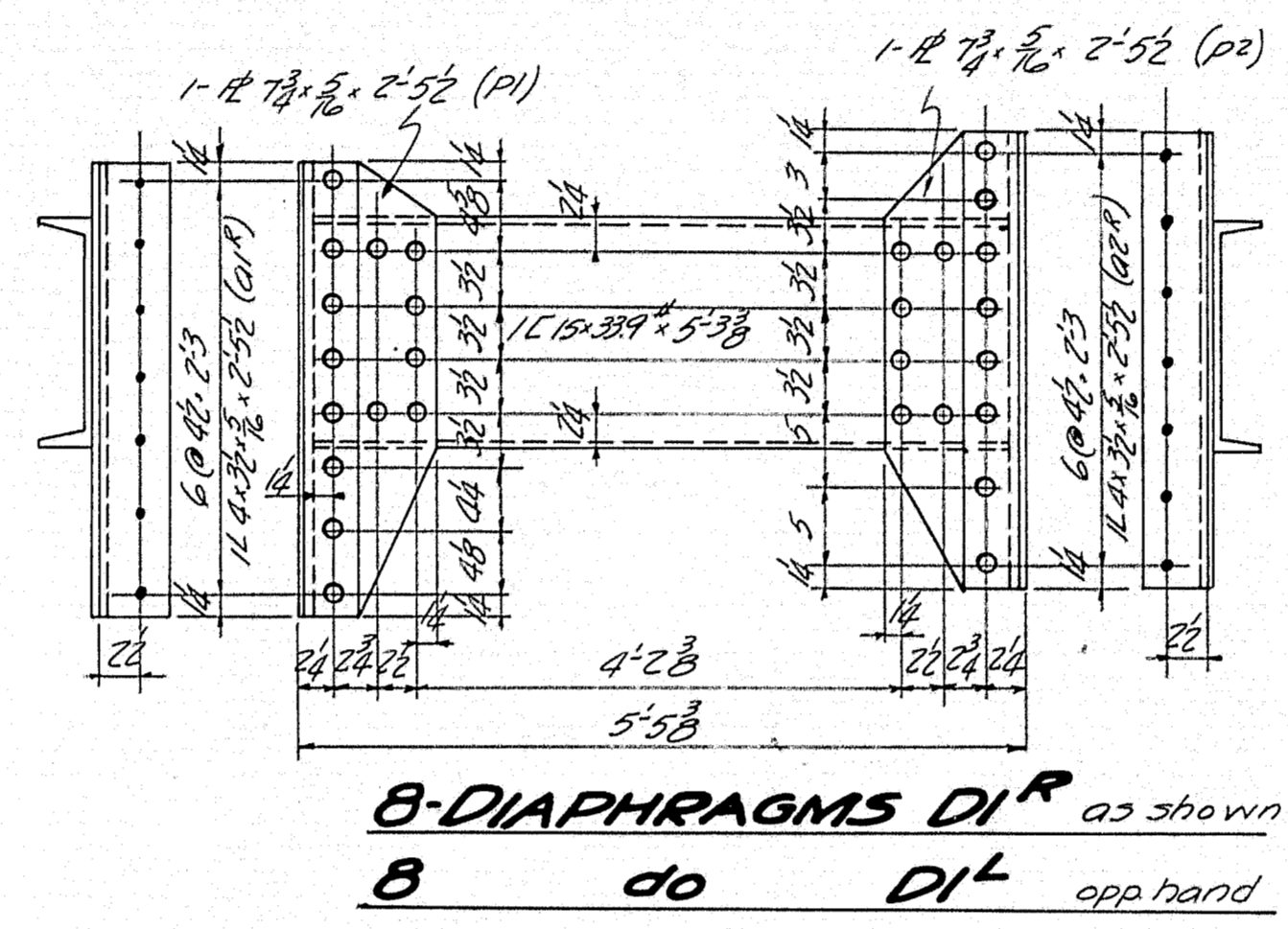
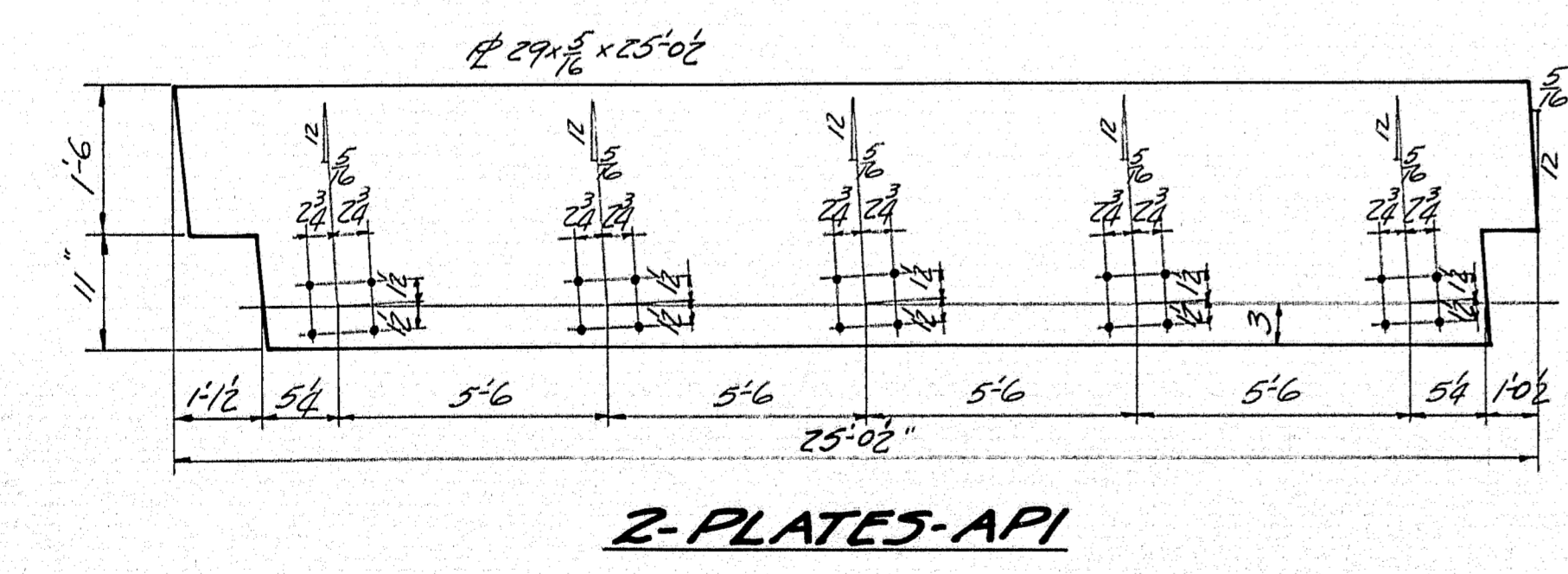
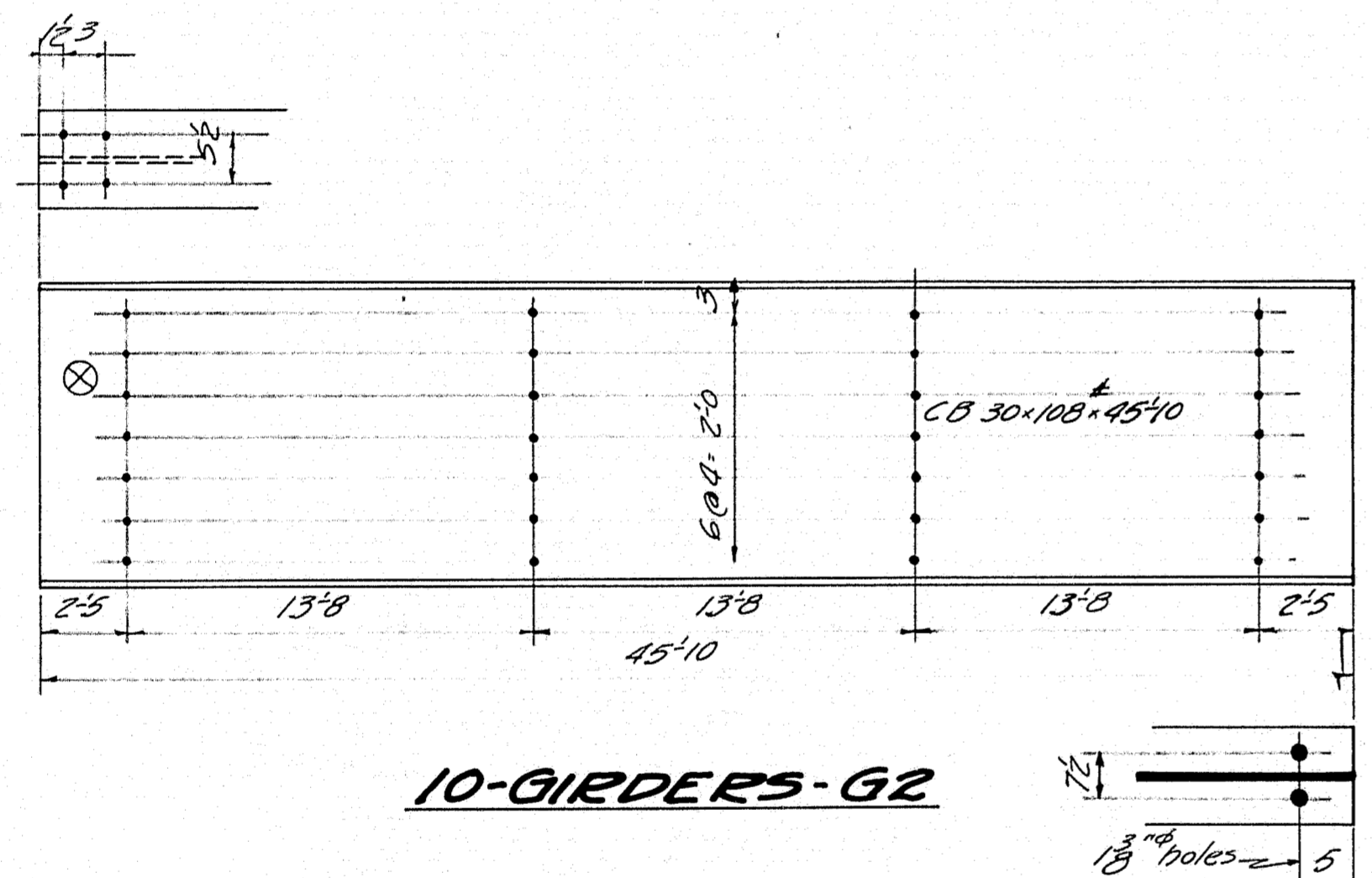
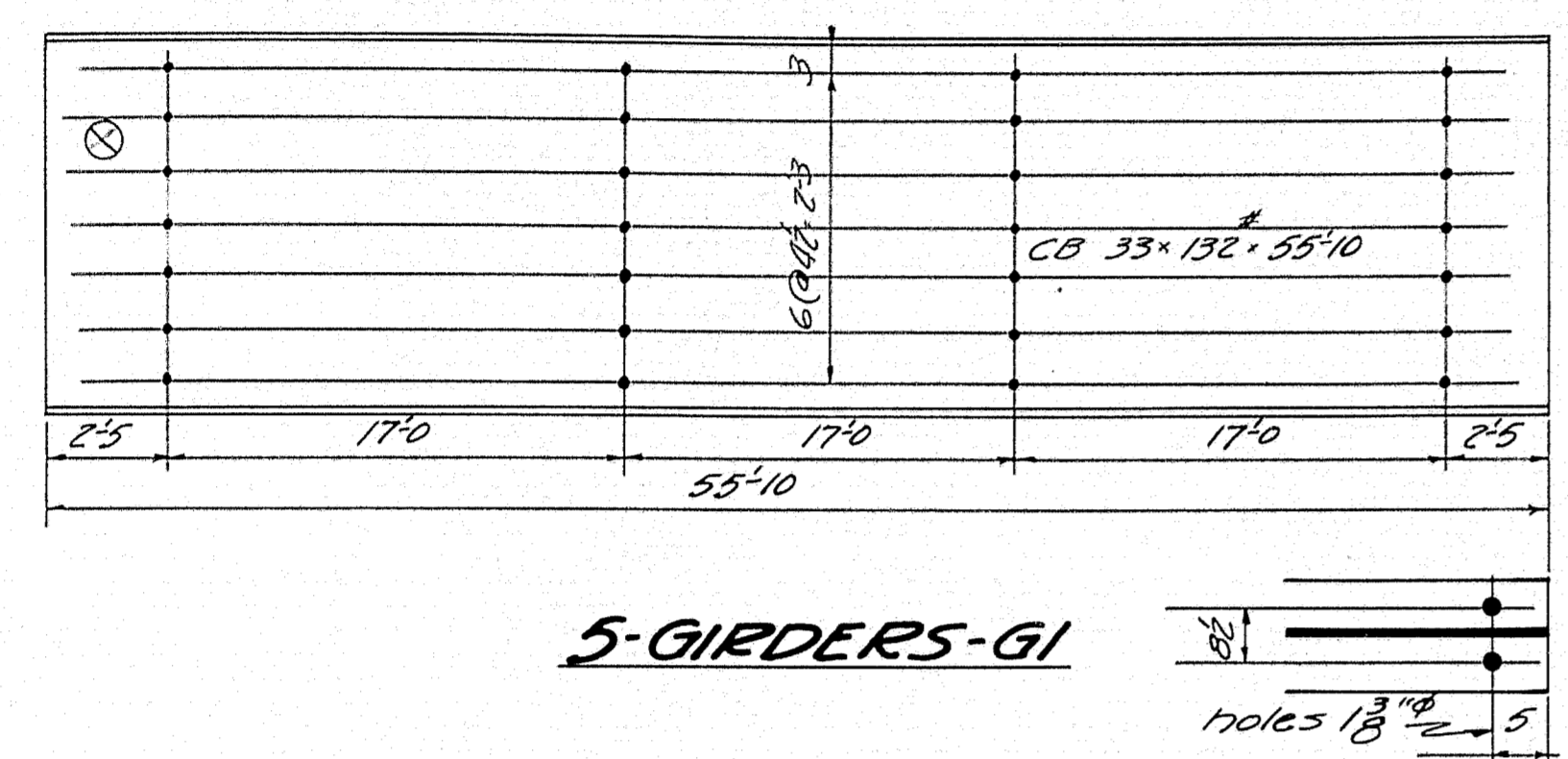
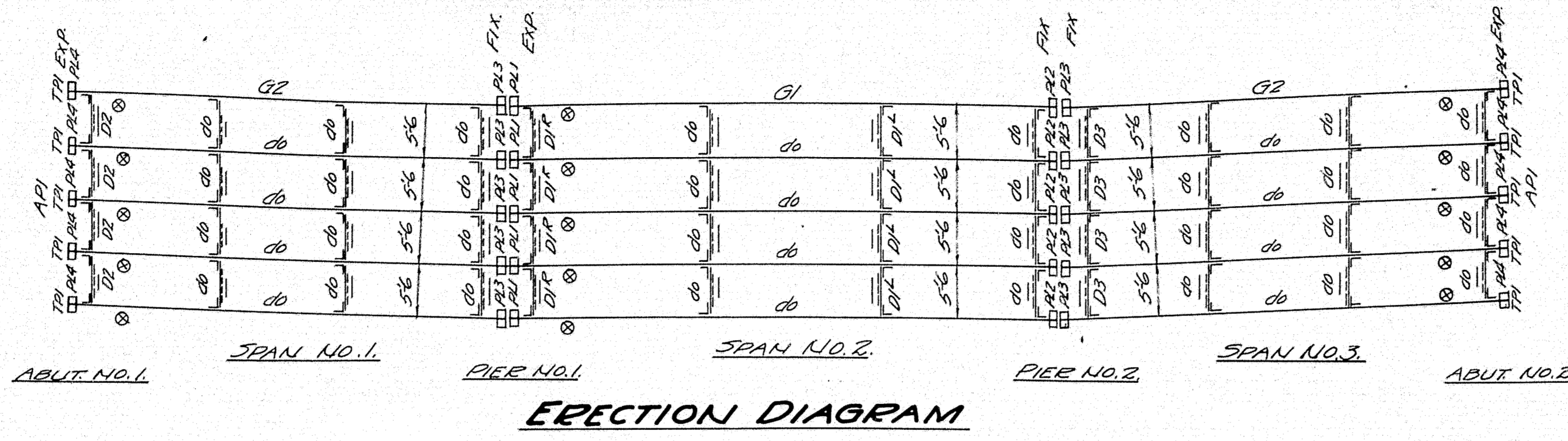


Plan V.B.E. 4/36
Traced M.L.
Checked by B.T.W.

Bridge	3287
Town	09-07

STATE HIGHWAY COMMISSION
BRIDGE DIVISION
HALL BRIDGE
over
NEZINSCOT RIVER
in the town of
BUCKFIELD
OXFORD COUNTY
SUBSTRUCTURE DETAILS
Sheet 4 of 6 Augusta, Me. April 1936

24-64



FIELD BOLT LIST
All bolts to be US Std. with hex nuts

NO	Length
56	2"
252	2 1/4"
90	3"
112	3 1/4"

STATE HIGHWAY COMMISSION
 BRIDGE DIVISION
HALL BRIDGE
 over
NEZINSCOT RIVER
 in the town of
BUCKFIELD
OXFORD COUNTY
 STRUCTURAL STEEL DETAILS
 Sheet 5 of 6 August 1936

